



(Picture provider : Yatadera Temple)

Hydrangea in Yatadera Temple

Yatadera Temple is also called hydrangea temple because of 10,000 hydrangea flowers in the garden. When the garden open from 6/1 to 7/10, you can find about 60 kinds of hydrangeas bloom around the temple, as hydrangea sea!



Bus running everyday from June 3rd to June 25th, 2017.

Kintetsu Koriyama sta. ⇔ Yatadera-mae

■ Fare(One way) / Adult ¥370 Child ¥190
 ■ Time required about 20min.

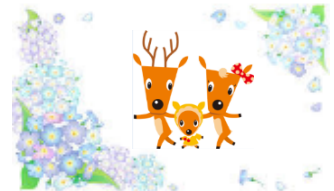
TIME	From Kintetsu Koriyama sta. ①		TIME	From Yatadera-mae		
	Weekday	Saturday & Sunday		Weekday	Saturday	Sunday
9	35	10	9	—		
10	10 35	10 25 35	10	2 35	2 35	50
11	10 40	10 25 40	11	2 35	2 35	55
12	10 40	10 25 40	12	10 35	15 35	55
13	10 35	10 25 35	13	10 35	15 35	50
14	10 40	10 25 40	14	2 35	2 35	55
15	10 40	10 25 40	15	10 35	10 35	55
16	10 40	10 35	16	10 35	10 35	55
17	—	—	17	10	2	—

Horyuji sta. ⇔ Yatadera-mae

■ Fare(One way) / Adult ¥430 Child ¥220
 ■ Time required about 23min.

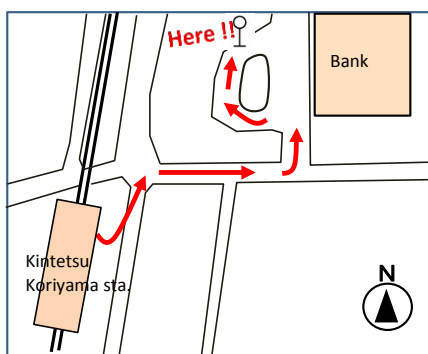
TIME	From JR Horyuji sta. ①		TIME	From Yatadera-mae	
9	35		9	—	
10	5 35		10	5 35	
11	5 35		11	5 35	
12	5 35		12	5 35	
13	5 35		13	5 35	
14	5 35		14	5 35	
15	5 35		15	5 35	
16	—		16	5 35	

Let's go to Yatadera, which is famous for hydrangeas, to see the hydrangea blossoms ♪



Access

<Bus stop "Kintetsu Koriyama sta. ①">



<Bus stop "Horyuji sta. ①">

